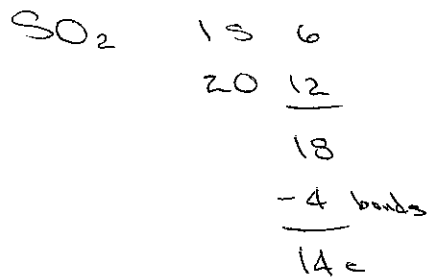
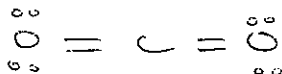
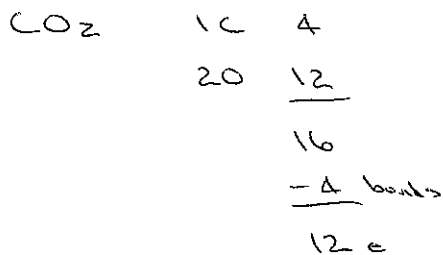


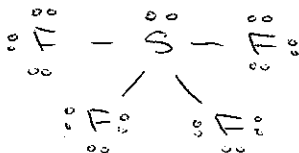
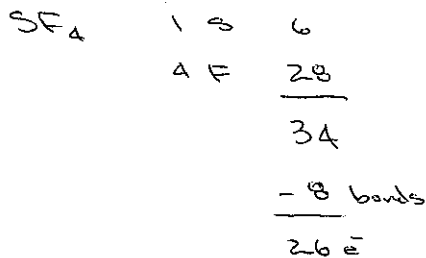
VSEPR Rules
(Answers to Practice Exercises)



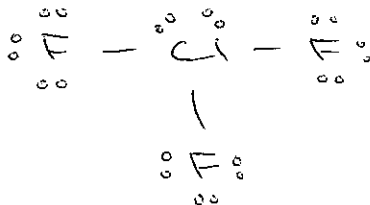
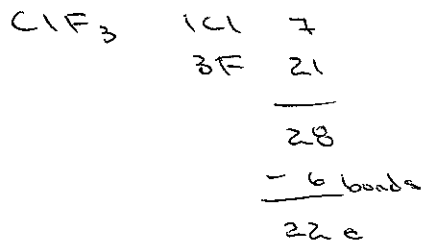
steric # = 3 ✓
bent ; < 120°



steric # = 2
linear ; 180°

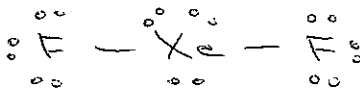
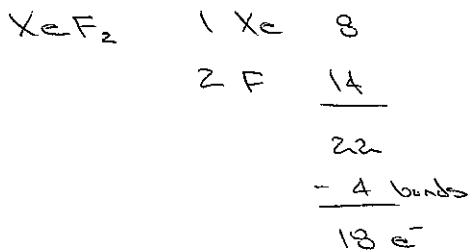


steric # = 5
see-saw ; 90°, 120°, 180°

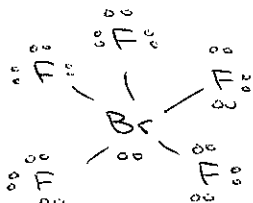
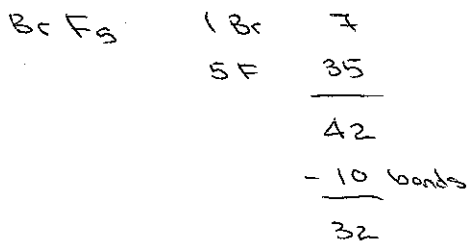


steric # = 5 ✓
T-shaped ; 90°, 180°

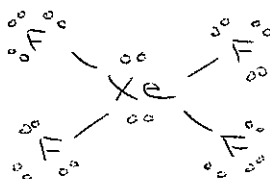
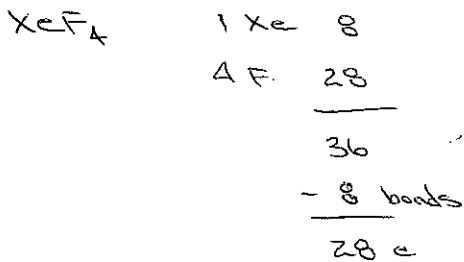
VSEPR Rules
(Answers to Practice Exercises)



steric # = 5
linear, 180°



steric # = 6
square pyramidal; 90°, 180°



steric # = 6
square planar; 90°, 180°

